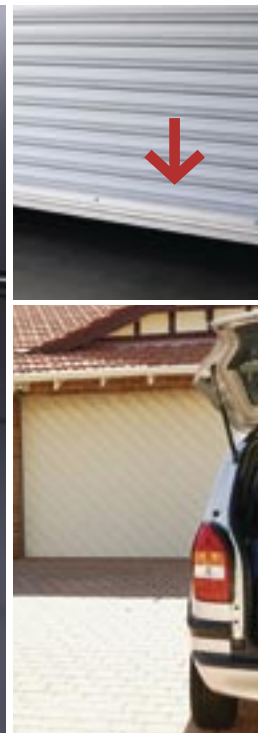


FM100



Safety ensured by Pinch Force Measurement

The **FM100** from DriveTest is an electronic pinch force measuring system for power driven doors and gates. Typical applications include final inspection of new installations, and periodic conformance testing of existing equipment. Combining rugged construction with precision, the advanced mechanical design delivers exact measurements, even after years of service in an industrial environment. The FM100 has been tested and certified by the German TÜV Nord.

Sites with multiple doors and gates call for fast and easy performance of repetitive measurements. DriveTest has responded to this requirement by developing software which streamlines the measurement process and drastically reduces documentation effort. Measurements made on a complete site can be entered, printed as a table,

and stored in a database with a minimum of user entries. The investment in an FM100 system repays itself within a short time.

DriveTest is one of the pioneering companies in the field of pinch force measurement and offers a broad range of different systems for a variety of applications. Major customers include the Deutsche Bahn and major international airports.

- **Dependable** – certified by the TÜV Nord
- **Applicable standards** – EN 12445/12453, prEN 12650, DIN V 18650, etc.
- **Precision measurements** – uses frictionless guides and single point load cell
- **Robust construction** – casing manufactured from durable aluminium and stainless steel for long service life in industrial environments
- **Ease of Use** – single button operation, separate sensor and electronics allows remote operation up to 5 m
- **Supplied with all components** – high-quality transportation case and software included, no additional items to purchase
- **Professional, feature-rich software** – PinchPilot offers complete functionality
- **Complete customer support** – in-house calibration service, standards update service ensures use of newest standards version.
- **Software support** – integration in existing software infrastructure available
- **Measure complex sites in a single pass** – data logging module stores up to 100 measurements



→ Technical specifications FM100

Sensor FM100

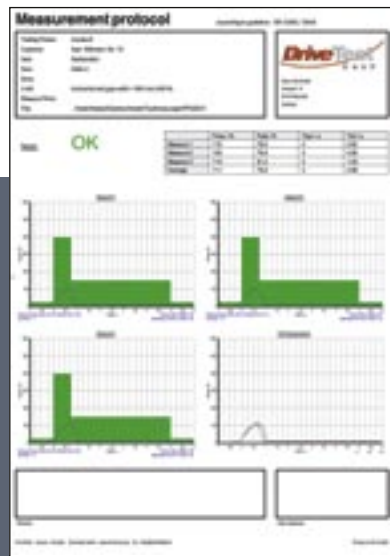
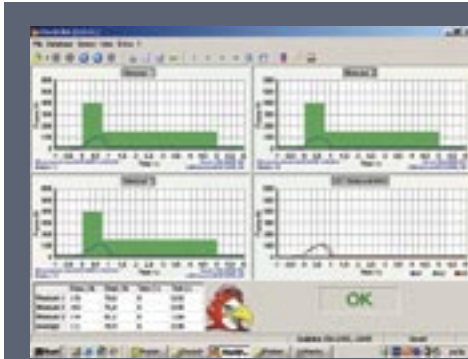
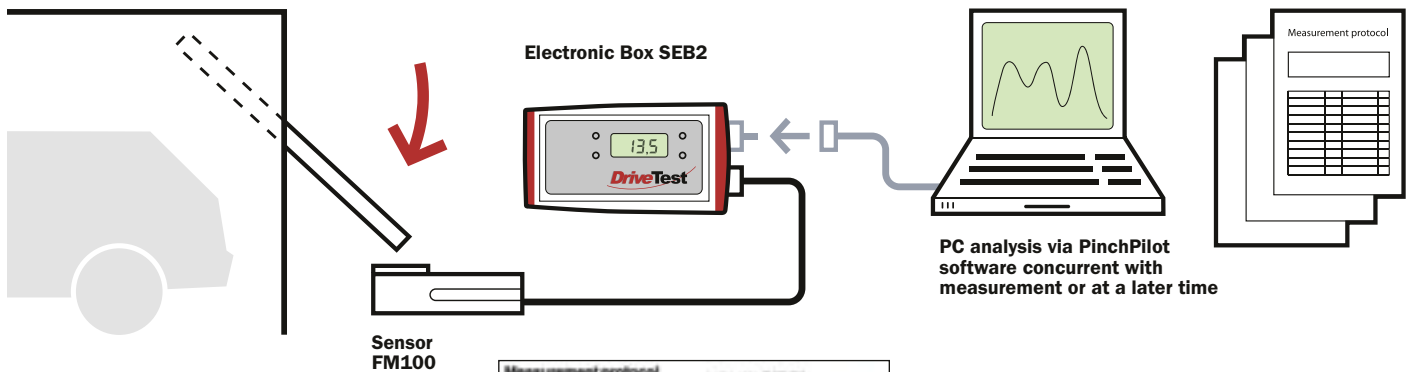
Measurement Range	0 – 2,000 N
Measurement Tolerance	+/- 3 N or 3 %, whichever is greater
Stiffness	500 N/mm
Gap width	50 mm
Diameter	80 mm
Measurement Technique	Strain Gauge Bridge
Size	210 x 80 x 50 mm
Weight	2.1 kg

Electronic Box SEB2

- Complete measurement unit in combination with sensor (PC optional when measuring)
- LCD Display
- Powered via one 9 V battery
- Onboard clock
- Storage for appr. 100 measurements
- Sensor and PC interfaces
- Displays peak force and pass/fail assessment

PC Analysis Software PinchPilot

- Multi-Language (D, GB, I, F, E)
- Graphical display of Force vs. Time
- Calculation of relevant parameters
- Assessment with respect to different standards
- Support for user defined standards
- Printed reports
- Data export (Excel, Word)



PC Analysis Software PinchPilot (included)

System Requirements

- Operating System Windows 98 SE, NT, 2000, XP
- CPU Pentium ≥ 133 MHz
- RAM ≥ 32 MB
- Free Disk Space ≥ 50 MB
- CD ROM Drive
- RS232 or USB Interface

What's included

- Sensor with 5.5 m connection cable
- Separate data logging module (Electronic Box SEB2) with LCD display, LED display, membrane input key, and serial interface
- 9V Battery
- Aluminium transportation case with foam inserts for ease of storage and transport
- PC connection cable (RS232, USB)
- CD with PinchPilot PC analysis software and documentation
- Users Manual in English and German
- Calibration certificate



www.drivetest.de

DriveTest