



# SI Instruments EasyPlot Software



Motorised and manual test stands



## Windows software for logging, plotting and analysing force and torque data

SI Instruments provide a range of Mecmesin force and torque gauges used in quality control, production, and R & D departments. Industrial companies throughout the world have come to rely on this top quality range of instruments to assist in force and torque measurement applications.

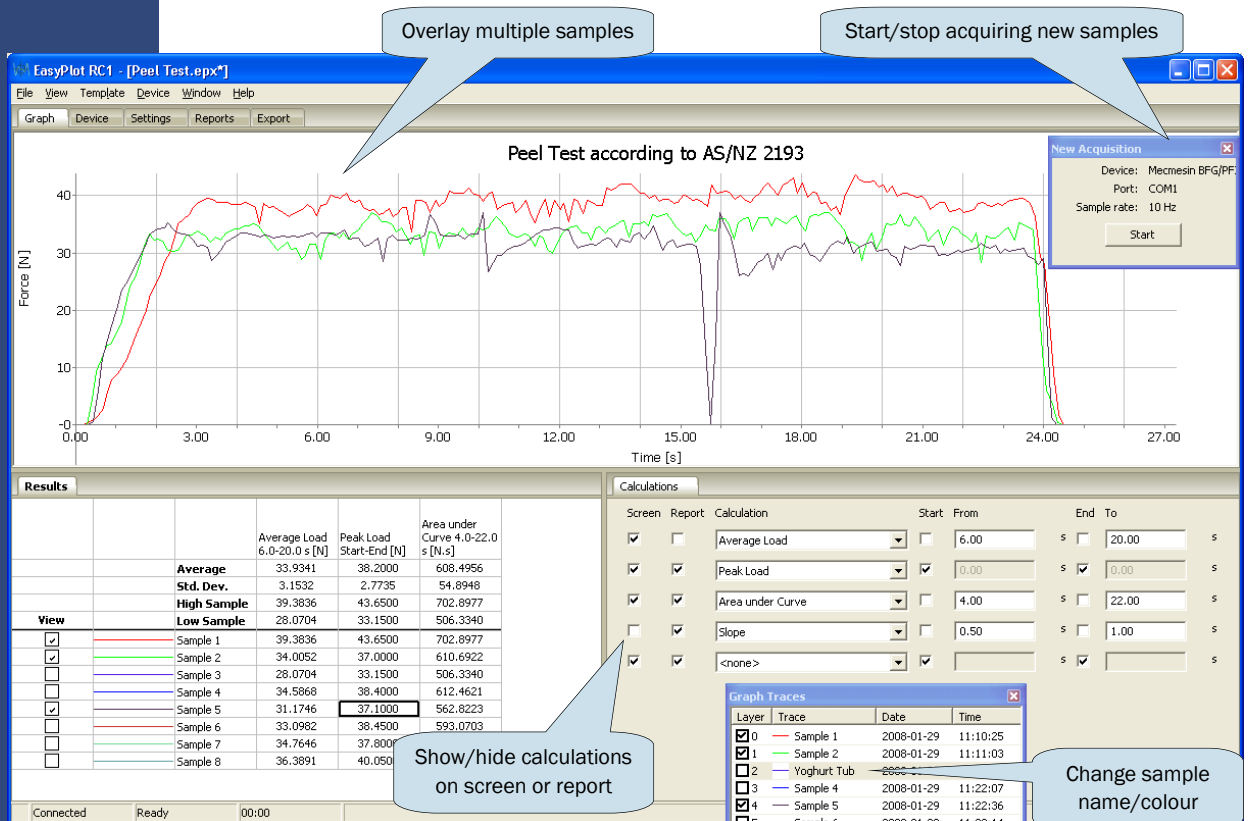
EasyPlot Software is a simple, yet powerful software program for graphing force vs. time or torque vs. time directly on the PC.

For use with Mecmesin force or torque gauges, EasyPlot provides a cost-effective solution to acquiring graphs and performing further analysis

Calculations can be performed automatically for each individual sample, as well as comparative calculations. Calculations include area under curve, average load, load at a certain time, peak load, slope, and trough.

### Key features

- ✓ Easy to use
- ✓ Connect using Bluetooth or RS232
- ✓ Capture unlimited data samples
- ✓ Use with Mecmesin Force Gauges
- ✓ Real time plotting
- ✓ Automatic & Comparative calculations
- ✓ Compatible with Windows 2000, XP, Vista, 7 & 8
- ✓ Force vs. Time
- ✓ Force vs. Displacement
- ✓ Torque vs. Time
- ✓ Torque vs. Angle
- ✓ Data export to spreadsheet



SI Instruments Pty Ltd

GPO Box 1530, Adelaide, SA, 5001  
256 South Road, Hilton, SA 5033 AUSTRALIA

www.si-instruments.com.au  
Email: info@si-instruments.com.au  
Phone: +61 (0) 8 8352 5511  
Fax: +61 (0) 8 8352 6011



# SI Instruments EasyPlot Software

## Technical Specifications

Connect to	Any version of the Mecmesin Advanced Force Gauge, Mecmesin Basic Force Gauge, Mecmesin Advanced Force and Torque Indicator, Mecmesin Portable Force Indicator (versions from 1993 onwards)
Cables required	RS232 AFG or BFG—9 pin serial cable, USB (no cables required for Bluetooth)
Computer required	IBM compatible PC running Windows 2000, XP, or Vista
RS232 communication	Any COM or USB port. Baud rate selectable from 110–256,000
Bluetooth communication	Class 1 communication with Mecmesin Advanced Force Gauge or Mecmesin Advanced Force and Torque Indicator
Conversion (Real Time)	Time to displacement with constant speed, or time to angle with constant rotary speed
Data acquisition rate	From 0.01Hz to 10Hz
Directly plotted/accumulated data	Force or torque vs. time, force vs. displacement, torque vs. angle
Force units	mN, N, kN, g, kg, oz, lb
Torque units	mN.m, N.m, kN.m, g.cm, kg.cm, kg.m, oz.in, lb.in, lb.ft
Time units	minutes, seconds, hours
Distance units	mm, cm, m, km, ft, in
Logging start/stop triggers	Manual start, or by force/torque/time/distance/angle trigger points
Graph scaling & zooming/rescaling	Yes
Available calculations	Area under curve, average load, load at x, peak load, slope, trough
Display multiple tests	Yes, up to 8 tests can be overlaid simultaneously
Facility to print graphs & raw data	Yes
Export to other PC software	Yes, as ASCII—American or European format (Ideal for Excel)



Force gauges



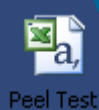
OH&S Force gauge kits

Default Export Filename: C:/Documents and Settings/Eric/Desktop/peel test.csv Browse

☐ Auto-add test results from completed tests  
☒ Result Headers  
☒ Result Units  
☒ Result Data Ranges  
☒ Attach Date  
☒ Attach Time

**Already have a force gauge?  
Contact us to find out about  
compatibility.**

Easily export Files to Excel or other packages



Peel Test

Microsoft Excel - Peel Test

	A	B	C	D	E	F	G	H	I	J	K
1	Trace	Date	Time	Area under	Average Load	Load at x	Peak Load	Position @	Trough	Position @	Trough
2				Start-End	Start-End	0.4-End s	Start-End	Start-End	Start-End	Start-End	Start-End
3				[N.s]	[N]	[N]	[N]	[s]	[N]	[s]	[s]
4	Sample 1	6/12/2007	11:11:57	44.9819	10.6051	12.7	45.05	0.875	0.2	2.0625	
5	Sample 2	6/12/2007	11:12:05	44.2096	13.9966	19.7	56.3	0.6719	0.15	1.7656	
6	Sample 3	6/12/2007	11:12:11	37.166	8.8795	16.25	37.65	0.9531	0.15	2.6875	
7	Sample 4	6/12/2007	11:12:18	36.1923	8.7855	14	36.35	0.7656	0.15	2.0313	
8	Sample 5	6/12/2007	11:12:26	36.6977	9.3041	16.35	45.8	0.7813	0.15	3.4688	
9											
10											

Graph Device Settings **Reports** Export

Operator: Joshua

Customer: Acme Widgets

Notes: Check seals on yoghurt tubs - one tub not properly sealed

☒ Title Page  
☒ Definition Page  
☒ Graphs  
☒ Results

**Reporting and Traceability**

**Download your  
free trial now:**

[www.si-instruments.com.au](http://www.si-instruments.com.au)

Trial software stored under the Mecmesin heading in the download centre

**SI Instruments Pty Ltd**

GPO Box 1530, Adelaide, SA, 5001  
256 South Road, Hilton, SA 5033 AUSTRALIA

[www.si-instruments.com.au](http://www.si-instruments.com.au)  
Email: [info@si-instruments.com.au](mailto:info@si-instruments.com.au)  
Phone: +61 (0) 8 8352 5511  
Fax: +61 (0) 8 8352 6011