

## TH240k+Ko PNEUMATIC VISE GRIPS

Simple pneumatic vise grips for universal use

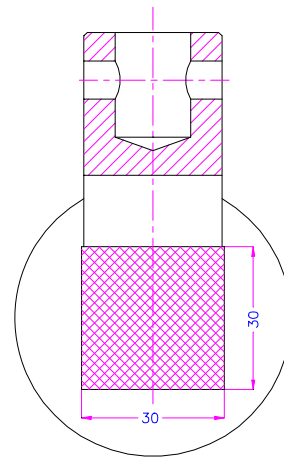
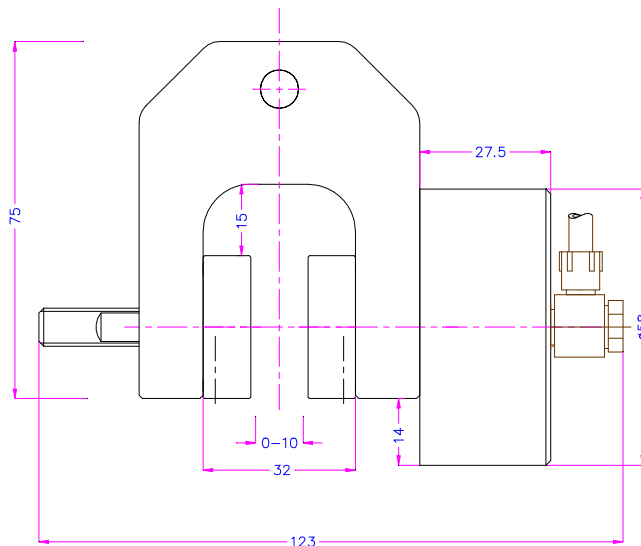
<b>Item no.:</b>	<b>TH240k+Ko TH240k+2Ko</b>
Clamping force:	1.2 kN at 7 bar (2.5 kN at 16 bar with TH216 compressor)
Jaw opening:	0-10 mm depending on jaw type (see p. 5)
Standard coupling:	Af15.9 mm or Af20 mm Further couplings on request
Pneumatic connection:	M5 internal thread
Body:	Anodized aluminium
Jaws:	Hardened steel 58HRC
Standard temperature range:	0 ... +70°C Further temperature ranges on request
Weight per grip without jaws:	0.4 kg (TH240k+Ko) 0.6 kg (TH240k+2Ko)
Scope of supply:	1 pair of grips without jaws



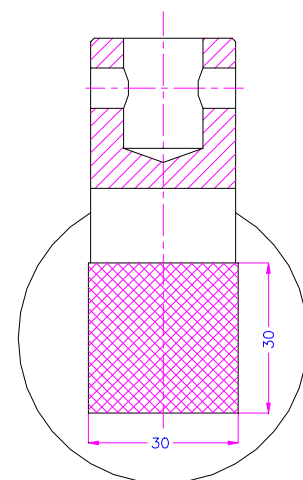
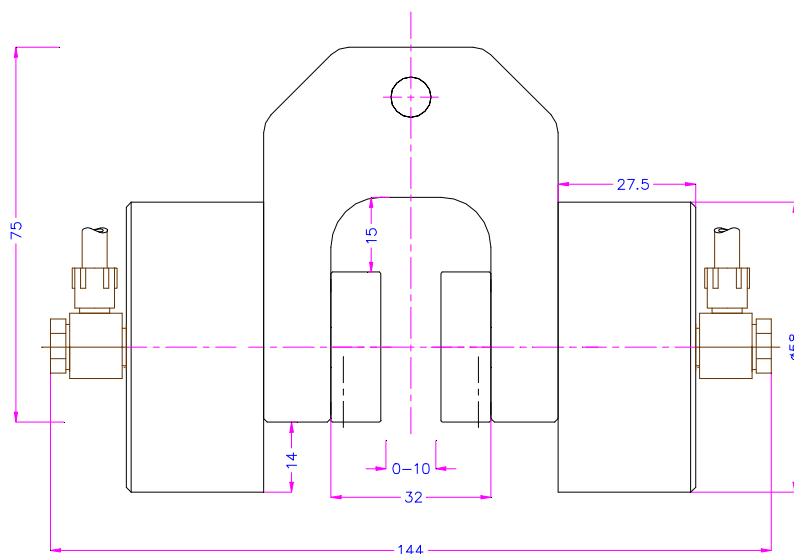
TH240k+Ko



TH240k+2Ko



TH240k+Ko



TH240k+2Ko

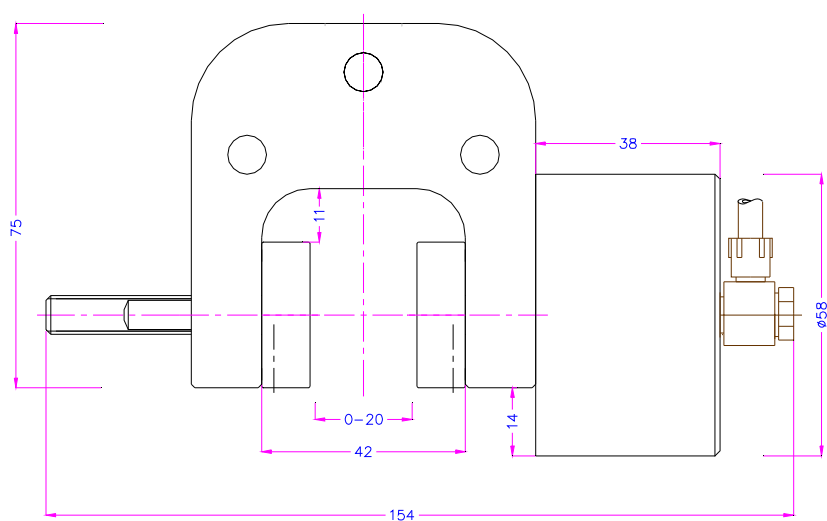
<b>Item no.:</b>	<b>TH240k-S20+Ko</b> <b>TH240k-S20+2Ko</b>
Clamping force:	1.2 kN at 7 bar (2.5 kN at 16 bar with TH216 compressor)
Jaw opening:	0-20 mm depending on jaw type (see p. 5)
Standard coupling:	Af15.9 mm or Af20 mm Further couplings on request
Pneumatic connection:	M5 internal thread
Body:	Anodized aluminium
Jaws:	Hardened steel 58HRC
Standard temperature range:	0 ... +70°C Further temperature ranges on request
Weight per grip without jaws:	0.5 kg (TH240k-S20+Ko) 0.7 kg (TH240k-S20+2Ko)
Scope of supply:	1 pair of grips without jaws



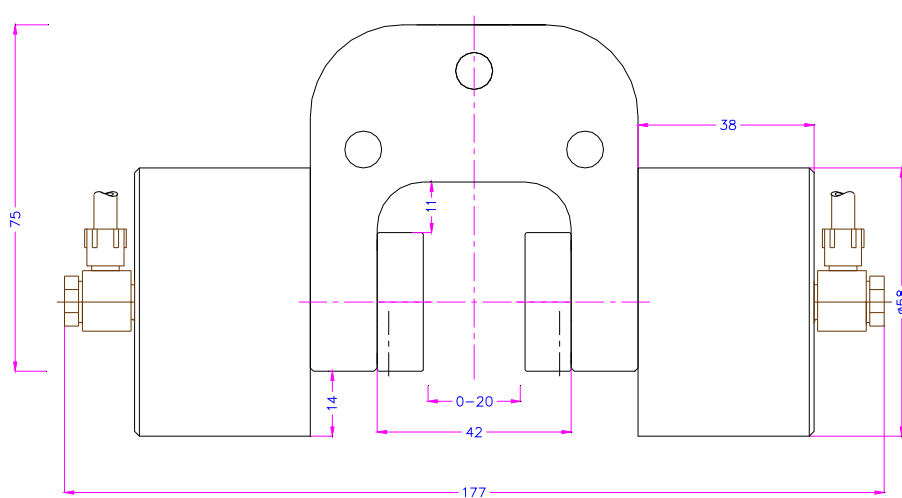
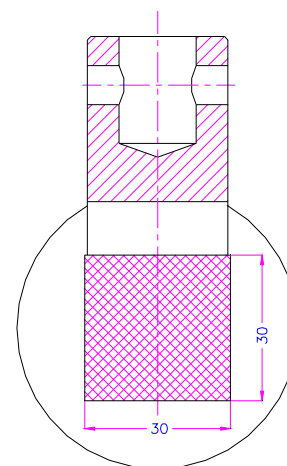
TH240k-S20+Ko



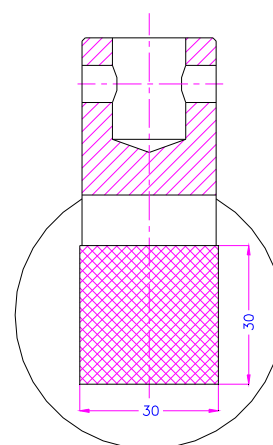
TH240k-S20+2Ko



TH240k-S20+Ko



TH240k-S20+2Ko



**Item no.:** **TH240k-S30+Ko**  
**TH240k-S30+2Ko**

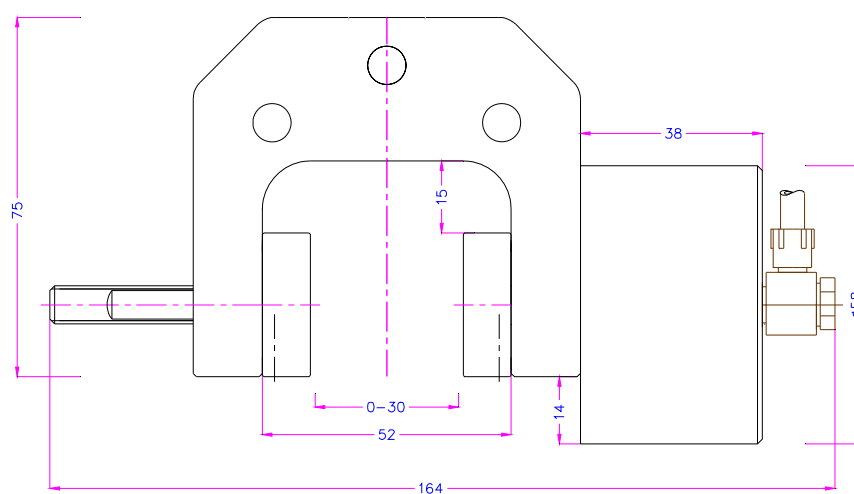
Clamping force:	1.2 kN at 7 bar (2.5 kN at 16 bar with TH216 compressor)
Jaw opening:	0-30 mm depending on jaw type (see p. 5)
Standard coupling:	Af15.9 mm or Af20 mm Further couplings on request
Pneumatic connection:	M5 internal thread
Body:	Anodized aluminium
Jaws:	Hardened steel 58HRC
Standard temperature range:	0 ... +70°C Further temperature ranges on request
Weight per grip without jaws:	0.54 kg (TH240k-S30+Ko) 0.74 kg (TH240k-S30+2Ko)
Scope of supply:	1 pair of grips without jaws



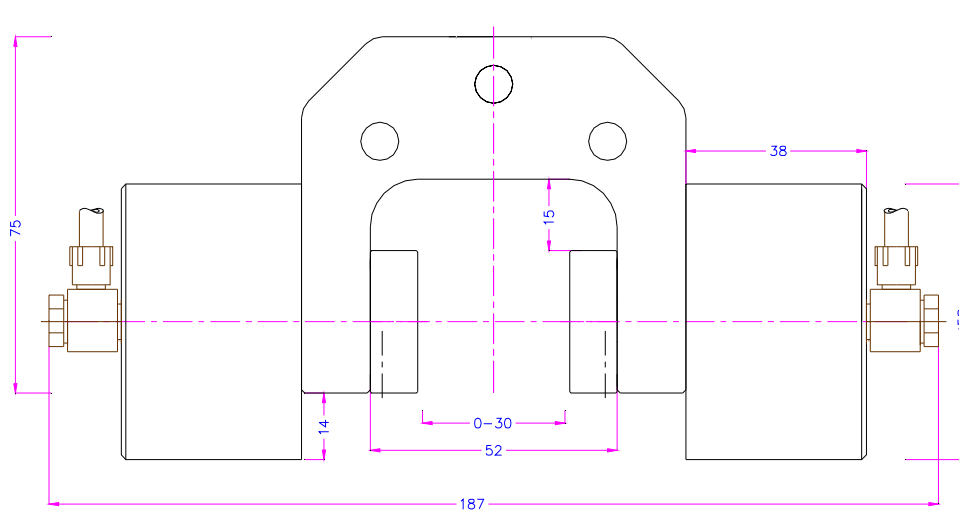
TH240k-S30+Ko



TH240k-S30+2Ko



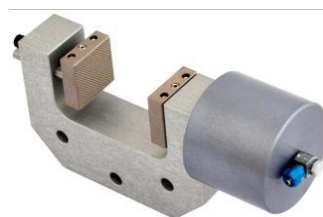
TH240k-S30+Ko



TH240k-S30+2Ko

**Item no.:** **TH240k-S50+Ko**  
**TH240k-S50+2Ko**

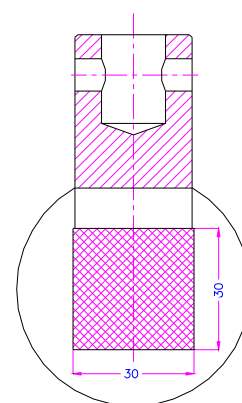
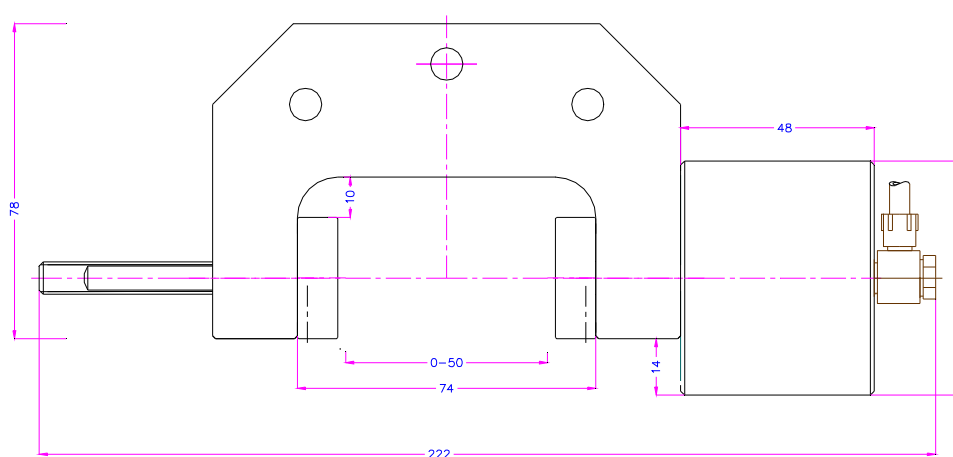
Clamping force:	1.2 kN at 7 bar (2.5 kN at 16 bar with TH216 compressor)
Jaw opening:	0-50 mm depending on jaw type (see p. 5)
Standard coupling:	Af15.9 mm or Af20 mm Further couplings on request
Pneumatic connection:	M5 internal thread
Body:	Anodized aluminium
Jaws:	Hardened steel 58HRC
Standard temperature range:	0 ... +70°C Further temperature ranges on request
Weight per grip without jaws:	0.8 kg (TH240k-S50+Ko) 1 kg (TH240k-S50+2Ko)
Scope of supply:	1 pair of grips without jaws



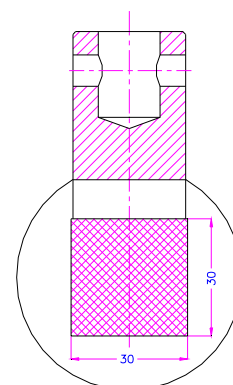
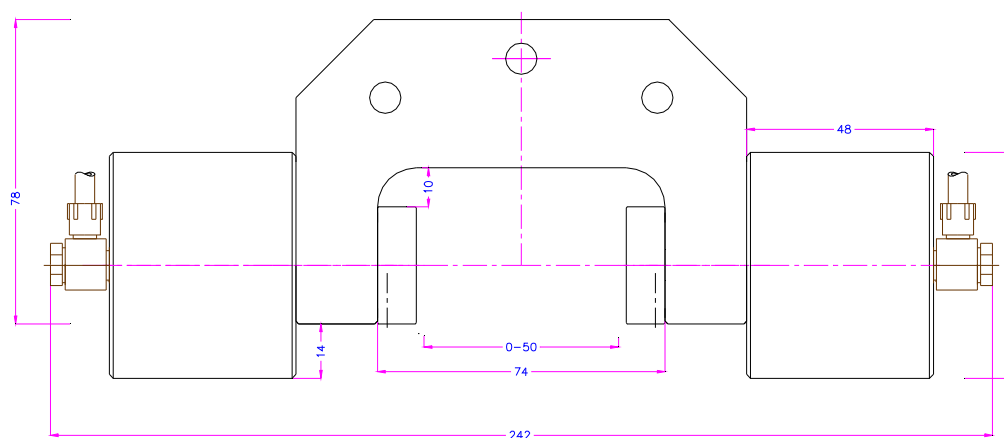
TH240k-S50+Ko



TH240k-S50+2Ko



TH240k-S50+Ko



TH240k-S50+2Ko

**Jaws for TH240k+Ko Series**

Scope of delivery 1 set = 4 jaws

Item no.	Surface	Clamping surface H x W	Opening for TH240k	Opening for TH240k-S20	Opening for TH240k-S30	Opening for TH240k-S50	Weight per pair
TH240k-B	Blank jaws	30 x 30 mm	0 – 10 mm	0 - 20 mm	0 – 30 mm	0 – 50 mm	0.13 kg
TH240k-BG	Rubber jaws	30 x 30 mm	0 – 8 mm	0 - 18 mm	0 – 28 mm	0 – 48 mm	0.13 kg
TH240k-BP	Pyramid jaws	30 x 30 mm	0 – 10 mm	0 - 20 mm	0 – 30 mm	0 – 50 mm	0.12 kg
TH240k-BV2	V-jaws	30 x 30 mm	Ø 2 – 9 mm	Ø 2- 20 mm	Ø 2- 30 mm	Ø 2 – 50 mm	0.12 kg
TH240k-BV3	V-jaws	30 x 30 mm	Ø 3 – 9 mm	Ø 3 – 20 mm	Ø 3 - 30 mm	Ø 3 – 50 mm	0.13 kg
TH240k-BW	Wave jaws	30 x 30 mm	0 – 10 mm	0 - 20 mm	0 – 30 mm	0 – 50 mm	0.12 kg
TH240k-BD	Diamond jaws	30 x 30 mm	0 – 10 mm	0 - 20 mm	0 – 30 mm	0 – 50 mm	0.13 kg
TH240k-BLC	Line-contact jaws	30 x 30 mm	0 – 6 mm	0 – 16 mm	0 – 26 mm	0 – 46 mm	0.13 kg
TH240k-B50	Blank jaws	30 x 50 mm	0 – 10 mm	0 - 20 mm	0 – 30 mm	0 – 50 mm	0.22 kg
TH240k-BG50	Rubber jaws	30 x 50 mm	0 – 8 mm	0 - 18 mm	0 – 28 mm	0 – 48 mm	0.23 kg
TH240k-BP50	Pyramid jaws	30 x 50 mm	0 – 10 mm	0 - 20 mm	0 – 30 mm	0 – 50 mm	0.21 kg
TH240k-BW50	Wave jaws	30 x 50 mm	0 – 10 mm	0 - 20 mm	0 – 30 mm	0 – 50 mm	0.20 kg
TH240k-BD50	Diamond jaws	30 x 50 mm	0 – 10 mm	0 - 20 mm	0 – 30 mm	0 – 50 mm	0.22 kg
TH240k-B80	Blank jaws	30 x 80 mm	0 – 10 mm	0 - 20 mm	0 – 30 mm	0 – 50 mm	0.36 kg
TH240k-BG80	Rubber jaws	30 x 80 mm	0 – 8 mm	0 - 18 mm	0 – 28 mm	0 – 48 mm	0.37 kg
TH240k-BP80	Pyramid jaws	30 x 80 mm	0 – 10 mm	0 - 20 mm	0 – 30 mm	0 – 50 mm	0.35 kg
TH240k-BW80	Wave jaws	30 x 80 mm	0 – 10 mm	0 - 20 mm	0 – 30 mm	0 – 50 mm	0.32 kg
TH240k-BD80	Diamond jaws	30 x 80 mm	0 – 10 mm	0 - 20 mm	0 – 30 mm	0 – 50 mm	0.36 kg
TH240k-B100	Blank jaws	30 x 100 mm	0 – 10 mm	0 - 20 mm	0 – 30 mm	0 – 50 mm	0.45 kg
TH240k-BG100	Rubber jaws	30 x 100 mm	0 – 8 mm	0 - 18 mm	0 – 28 mm	0 – 48 mm	0.46 kg
TH240k-BP100	Pyramid jaws	30 x 100 mm	0 – 10 mm	0 - 20 mm	0 – 30 mm	0 – 50 mm	0.45 kg
TH240k-BW100	Wave jaws	30 x 100 mm	0 – 10 mm	0 - 20 mm	0 – 30 mm	0 – 50 mm	0.51 kg
TH240k-BD100	Diamond jaws	30 x 100 mm	0 – 10 mm	0 - 20 mm	0 – 30 mm	0 – 50 mm	0.45 kg

\*Scope of delivery TH240k-BLC: 1 set = 2 x TH240k-BG + 2 x TH240k-BLC jaws

Jaws with other dimensions and surface coatings on request


**Blank jaws**

- Applicable for own further treatments
- Steel-blanks without coating


**Pyramid jaws**

- Pyramids 1.2x45°
- Hardened steel 58 HRC
- Nickel-plated


**Wave jaws**

- For flexible materials
- Wave 5 mm
- Hardened steel 58HRC
- Nickel-plated


**Rubber jaws**

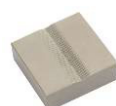
- 1 mm rubber coating (NBR)
- Nickel-plated


**Diamond jaws**

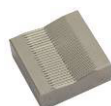
- Clamping surface coated with synthetic diamonds D91 (170/200 mesh)
- Nickel-plated


**Line-contact jaws**

- Radius 3
- Nickel-plated



TH240k-BV2



TH240k-BV3

**V-jaws**

- For all kinds of round samples
- Tooth pitch 1.2 mm
- Hardened steel 58HRC
- Nickel-plated

**Insert jaws for TH240k+Ko**

Scope of delivery 1 set = 4 jaws



For a quick change of jaws, insert jaws require carriers (TH240k-GT30).

Item no.	Surface	Clamping surface H x W	Opening for TH240k	Opening for TH240k-S20	Opening for TH240k-S30	Opening for TH240k-S50	Weight per pair
TH240k-GT30	Carrier	-	-	-	-	-	0.09 kg
TH240k-EB	Blank insert jaws	30 x 30 mm	0 – 8 mm	0 - 18 mm	0 – 28 mm	0 – 48 mm	0.05 kg
TH240k-EBG	Rubber insert jaws	30 x 30 mm	0 – 6 mm	0 - 16 mm	0 – 26 mm	0 – 46 mm	0.06 kg
TH240k-EBP	Pyramid insert jaws	30 x 30 mm	0 – 8 mm	0 - 18 mm	0 – 28 mm	0 – 48 mm	0.05 kg
TH240k-EBD	Diamond insert jaws	30 x 30 mm	0 – 8 mm	0 - 18 mm	0 – 28 mm	0 – 48 mm	0.06 kg

Insert jaws with other dimensions and surface coatings on request

**Pneumatic accessories:**

**TH205-1 Foot pedals**

None locking: The jaws of the grip open by pressing the foot pedal and close after removing the foot from the pedal.

Scope of delivery: 1 pair of foot switches including tubes and fittings


**TH205-2 Foot pedals**

With locking function: The jaws of the grip open by pressing the foot pedal and remain opened after removing the foot from the pedal. The jaws close by pressing the pedal one more time.

Scope of delivery: 1 pair of foot switches including tubes and fittings


**TH205-PR10bar Pressure regulator**

Optional for TH205-1 or TH205-2

To adjust air pressure: 1-10 bar

**TH205-PR16bar Pressure regulator**

Optional for TH205-1 or TH205-2

To adjust air pressure: 1-16 bar


**TH205-3 Hand switches**

With locking function: The jaws of the grip close by pulling the handle and remain closed. The jaws open by pushing the handle back.

Scope of delivery: 1 unit of hand switches including tubes and fittings


**TH205-4-M5 Hand switches**

Pneumatic micro – hand switches, tubes and fittings, M5 connection

With locking function: The hand switches are directly installed at the grips, 3/2 directional valve.

Only for single action rods with spring inside.

Scope of supply: 2 hand switches including tubes and fittings


**TH216 Compressor for laboratories, oil-lubricated**

Max pressure 16 bar, 230 V, noise level: 38dB(A)/1m

Displacement 5 l/min, tank size 3.1 litre (0.82 gallon)

Dimensions: 340x290x340 mm (L x W x H); weight 16 kg

Different voltages available on request