

TH56g Screw Action Grip

Provides a simple and effective method to hold specimens
Dual acting design, also for asymmetrical samples
Jaws articulate and provide a self-alignment and a self-tightening effect

Opening: 0 – 15 mm (depending on jaws)
Weight: 2.08 kg per pair of grips without jaws

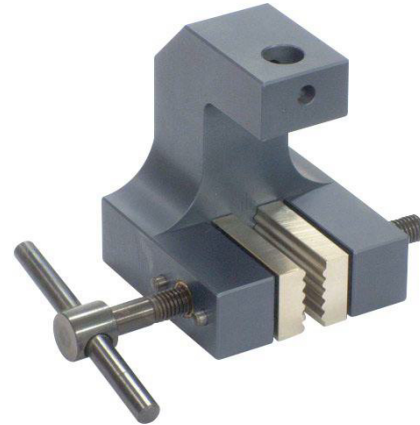
TH56g-H200 Vise grip

Total height: 220 mm
Distance between lower edge of jaws and coupling: 200 mm
Opening: 0 – 44 mm (depending on jaws)
Weight: 3.4 kg per pair of grips without jaws

A versatile general purpose grip applicable for plastics, textiles, paper, steel foils, aluminium, etc.

Jaws adjust to specimen by socket bearing

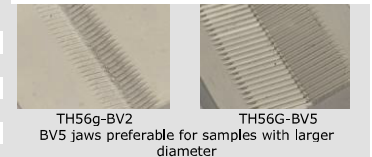
- Tensile force: 5 kN
- Temperature range: 0°C - +180°C (depending on jaws)
Other temperature ranges possible on request
- Body: aluminum, anodized
- Scope of delivery: 1 pair without jaws
- Also as pneumatic grip available
(see data sheet TH56g+ko)



Jaws for TH56g: Scope of delivery 1 set = 4 jaws

Item No.	Surface	Clamping surface H x W	Opening TH56g	Opening TH56g-H200	Weight per pair
TH56g-B	Blank jaws	30 x 50 mm	0 – 15 mm	0 – 44 mm	0.22 kg
TH56g-BG	Rubber jaws	30 x 50 mm	0 – 13 mm	0 – 42 mm	0.22 kg
TH56g-BP	Pyramid jaws	30 x 50 mm	0 – 15 mm	0 – 44 mm	0.21 kg
TH56g-BV2	V-jaws	30 x 50 mm	Ø 2 – 15 mm	Ø 2 – 41 mm	0.22 kg
TH56g-BV5	V-jaws	30 x 50 mm	Ø 5 – 11 mm	Ø 5 – 41 mm	0.26 kg
TH56g-BW	Wave jaws	30 x 50 mm	0 – 15 mm	0 – 44 mm	0.20 kg
TH56g-BD	Diamond jaws	30 x 50 mm	0 – 15 mm	0 – 44 mm	0.22 kg

Jaws with other dimensions and surface coatings on request



TH56g-BV2
BV5 jaws preferable for samples with larger diameter

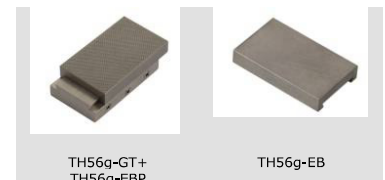
Insert jaws for TH56g: Scope of delivery 1 set = 4 jaws

Quick change system - insert jaws require carriers (TH56g-GT)

Item No.	Surface	Clamping surface H x W	Opening TH56g	Opening TH56g-H200	Weight per pair
TH56g-GT	Carrier	-			0.18 kg
TH56g-EB	Blank insert jaws	30 x 50 mm	0 – 5 mm	0 – 34 mm	0.14 kg
TH56g-EBG	Rubber insert jaws	30 x 50 mm	0 – 3 mm	0 – 32 mm	0.14 kg
TH56g-EBP	Pyramid insert jaws	30 x 50 mm	0 – 5 mm	0 – 34 mm	0.13 kg
TH56g-EBD	Diamond insert jaws	30 x 50 mm	0 – 5 mm	0 – 34 mm	0.14 kg

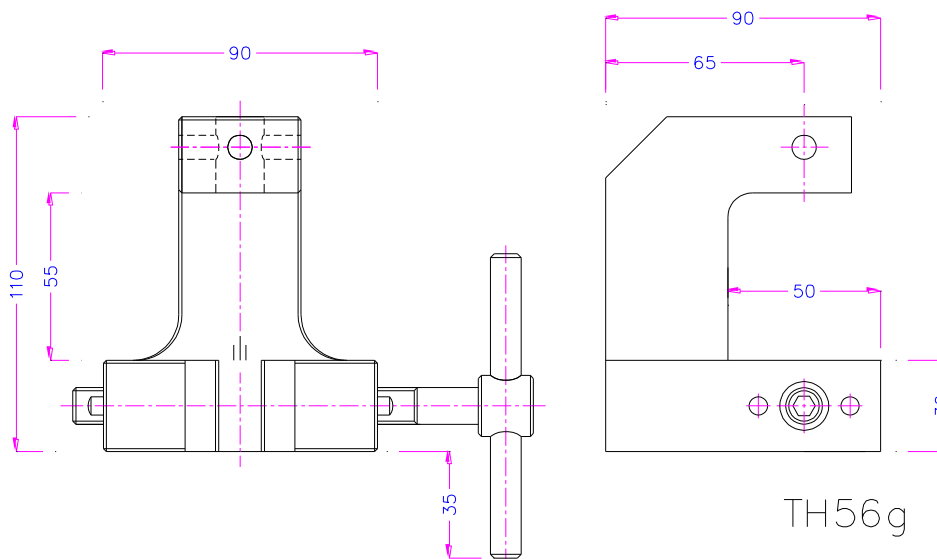
Jaws with other dimensions and surface coatings on request

BP and BW jaws are hardened (58 HRC) and nickel coated (5µm chemical)



TH56g-GT+
TH56g-EBP

TH56g-EB



Blank jaws

- Suitable for own further treatments
- Steel-blanks without coating

Rubber jaws

- 1 mm rubber coating (NBR)

Pyramid jaws

- Pyramid 1.2x45°
- Hardened steel 58 HRC
- Nickel-plated

V-jaws

- For all kinds of round samples
- Tooth pitch 1.2 mm.
- Tempered steel 58 HRC,
- Nickel-plated

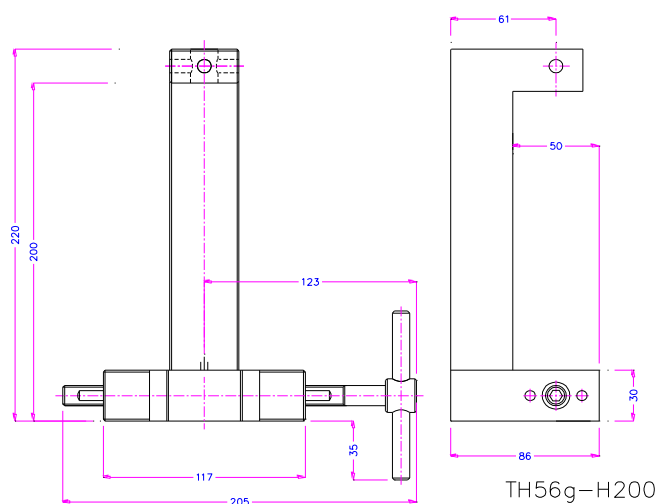
Wave jaws

- For flexible materials
- Wave 5 mm
- Hardened steel 58 HRC
- Nickel-plated

Diamond jaws

- Clamping surface coated with synthetic diamonds
- Nickel-plated





TH56g-H200

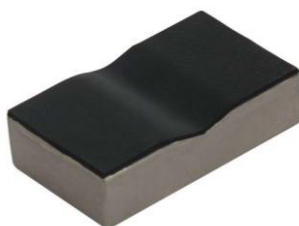


TH56g-H200+GT+EBP

Examples of other versions and custom built solutions



TH56g-EI
Optional for TH56g quick-release lever



TH56g-BVG
Rubber-coated V-jaws



TH56g-BP25x25
Clamping surface 25x25mm

Pneumatic versions (see data sheet TH56g+ko)



TH56g+Ko+BW



TH56g+2Ko+BP



TH56g-H200+Ko+BV
with adapter THS626-158-317

www.grip.de/G06

30.10.2015OI