

TH56k +Ko – Pneumatic grip

Pneumatic piston 50 mm Ø,
manually adjustable counter-jaw
Weight: 1.02 kg per pair of grips without jaws

TH56k + 2Ko Pneumatic grip

Two-sided pneumatic pistons 50 mm Ø
Weight: 1.4 kg per pair of grips without jaws

Clamping force: 1.2 kN / 7 bar
Temperature range: 0°C ... +70°C (depending on jaws)
Additional temperature ranges available on request
Body: Aluminum, anodized
Pneumatic connection: M5

Also available as vise grip ([see data sheet TH56k](#))

Ordering information

Item No. TH56k+Ko
Item No. TH56k+2Ko
Scope of delivery: 1 pair without jaws, which
must be ordered separately.



TH56k+ko

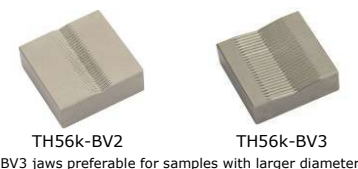


TH56k+2Ko

Jaws for TH56k+Ko and TH56k+2Ko: Scope of delivery 1 set = 4 jaws

Item No.	Surface	Clamping surface H x W	Opening	Weight per pair
TH56k-B	Blank jaws	30 x 30 mm	0 - 10 mm	0.13 kg
TH56k-BG	Rubber jaws	30 x 30 mm	0 - 8 mm	0.13 kg
TH56k-BP	Pyramid jaws	30 x 30 mm	0 - 10 mm	0.12 kg
TH56k-BV2	V-jaws	30 x 30 mm	2 - 10 mm Ø	0.13 kg
TH56k-BV3	V-jaws	30 x 30 mm	3 - 10 mm Ø	0.13 kg
TH56k-BW	Wave jaws	30 x 30 mm	0 - 10 mm	0.12 kg
TH56k-BD	Diamond jaws	30 x 30 mm	0 - 10 mm	0.13 kg
TH56k-BLC	Line contact jaws*	30 x 30 mm	0 - 6 mm	0.13 kg

*Scope of delivery TH56k-BLC: 1 set = 2 x TH56k-BG + 2 x TH56k-BLC jaws



TH56k-BV2 TH56k-BV3
BV3 jaws preferable for samples with larger diameter

Insert jaws for TH56k+Ko and TH56k+2Ko: Scope of delivery 1 set = 4 jaws

Quick change system. Insert jaws require carriers (TH56k-GT30)

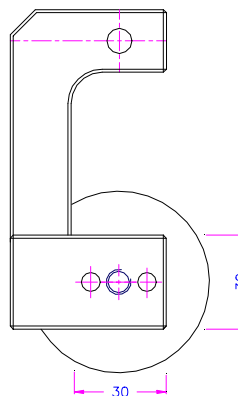
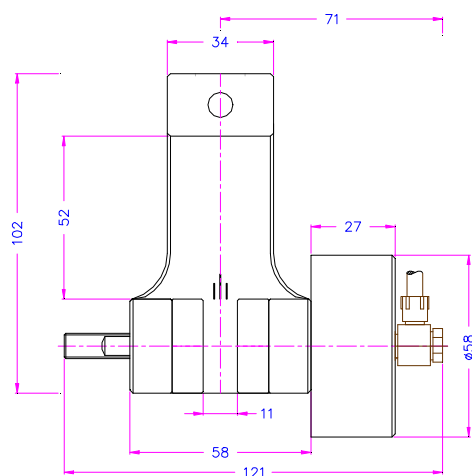
Item No.	Surface	Clamping surface H x W	Opening	Weight per pair
TH56k-GT30	Carrier	-	-	0.09 kg
TH56k-EB	Blank insert jaws	30 x 30 mm	0-8 mm	0.05 kg
TH56k-EBG	Rubber insert jaws	30 x 30 mm	0-6 mm	0.06 kg
TH56k-EBP	Pyramid insert jaws	30 x 30 mm	0-8 mm	0.05 kg
TH56k-EBD	Diamond insert jaws	30 x 30 mm	0-8 mm	0.06 kg

Jaws with other dimensions and surface coatings on request

BP and BW jaws are hardened (58 HRC) and nickel-plated (5µm chemical)



TH56k-GT30+TH56k-EBP



TH56k+Ko



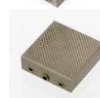
Blank jaws

- Applicable for own further treatments
- Steel blanks without coating



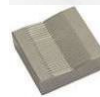
Rubber jaws

- Rubber coating (NBR)
- Nickel-plated



Pyramid jaws

- Pyramids 1.2x45°
- Hardened steel 58 HRC
- Nickel-plated



V-jaws

- For all kinds of round samples
- Tooth pitch 1.2 mm
- Hardened steel 58HRC
- Nickel-plated



Wave jaws

- For flexible materials
- Wave 5 mm
- Hardened steel 58HRC
- Nickel-plated



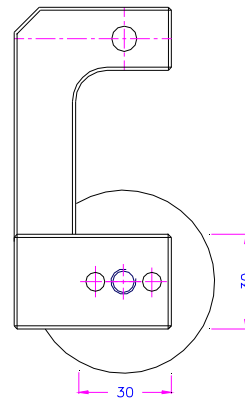
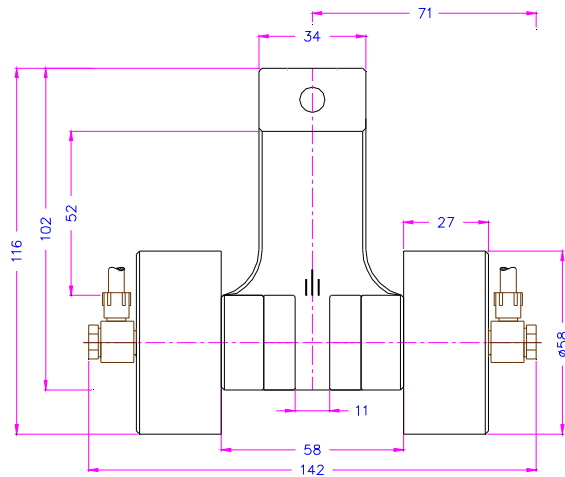
Diamond jaws

- Clamping surface coated with synthetic diamonds
- Nickel-plated



Line contact jaws

- Radius 3
- Nickel-plated



TH56k+2Ko

Examples of specially designed jaw faces



TH56k-BG20x20



TH56k-BP0.5x45
Small pyramid serrated



TH56k-BP20x30



TH56k-BTe
Teflon coating

Accessories:



TH205-1 Foot pedals

None locking: The jaws of the grip open by pressing the foot pedal and close after removing the foot from the pedal.
Scope of delivery: 1 pair of foot switches including tubes and fittings



TH205-2 Foot pedals

With locking function: The jaws of the grip open by pressing the foot pedal and remain opened after removing the foot from the pedal. The jaws close by pressing the pedal one more time.
Scope of delivery: 1 pair of foot switches including tubes and fittings



TH205-PR10bar Pressure regulator

Optional for TH205-1 or TH205-2
To adjust air pressure: 1-10 bar



TH205-PR16bar Pressure regulator

Optional for TH205-1 or TH205-2
To adjust air pressure: 1-16 bar



TH205-3 Hand switches

With locking function: The jaws of the grip close by pulling the handle and remain closed. The jaws open by pushing the handle back.
Scope of delivery: 1 unit of hand switches including tubes and fittings



TH205-4-M5 Hand switches

Pneumatic micro – hand switches, tubes and fittings, M5 connection
With locking function: The hand switches are directly installed at the grips, 3/2 directional valve.
Only for single action rods with spring inside.
Scope of supply: 2 hand switches including tubes and fittings

See also www.grip.de/G06

TH216 Compressor for laboratories, oil-lubricated

Max pressure 16 bar, 230 V, noise level: 38dB(A)/1m
Displacement 5 l/min, tank size 3.1 litre (0.82 gallon)
Dimensions: 340x290x340 mm (L x W x H); weight 16 kg
Different voltages available on request