

TH56k Screw Action Grip

Provides a simple and effective method to hold specimens
Dual acting design, also for asymmetrical samples
Jaws articulate and provide a self-alignment and a self-tightening effect

Versatile general-purpose for plastics, textiles, paper, metal foil, aluminium, brass, etc.

Tensile force: 1 kN

Temperature range: 0°C - +180°C (depending on jaws)
Additional temperature ranges on request

Body made of aluminium, anodised

Weight: 0.76 kg per pair of grips without jaws

Scope of supply: 1 pair without jaws

Also available as pneumatic version
(see datasheet TH56k+ko)

info@si-instruments.com.au
www.si-instruments.com.au



Blank (smooth) jaws



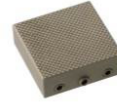
- Suitable for own further treatments
- Steel-blanks without coating

Rubber coated jaws



- 1 mm rubber coating (NBR)
- Nickel-plated

Pyramid jaws (serrated, cross cut)



- Pyramids 1.2x45°
- Hardened steel 58HRC
- Nickel-plated

V-jaws



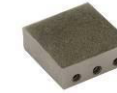
- For all kinds of round samples
- Tooth pitch 1.2 mm
- Hardened steel 58HRC
- Nickel-plated

Wave jaws (corrugated)



- For flexible materials
- Wave 5 mm
- Hardened steel 58HRC
- Nickel-plated

Diamond coated jaws

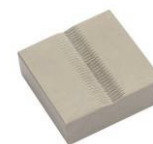


- Clamping surface coated with synthetic diamonds
- D91 (170/200 mesh)
- Nickel-plated

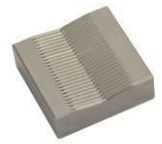
Jaws for TH56k: Scope of supply 1 set = 4 jaws

Item no.	Surface	Clamping surface H x W	Opening	Weight 1 pair
TH56k-B	Blank jaws	30 x 30 mm	0 - 10 mm	0.13 kg
TH56k-BG	Rubber coated jaws	30 x 30 mm	0 - 8 mm	0.13 kg
TH56k-BP	Pyramid jaws	30 x 30 mm	0 - 10 mm	0.12 kg
TH56k-BV2	V-jaws	30 x 30 mm	2 - 10 mm Ø	0.13 kg
TH56k-BV3	V-jaws	30 x 30 mm	3 - 10 mm Ø	0.13 kg
TH56k-BW	Wave jaws	30 x 30 mm	0 - 10 mm	0.12 kg
TH56k-BD	Diamond coated jaws	30 x 30 mm	0 - 10 mm	0.13 kg

Jaws with other dimensions and surface coatings on request



TH56k-BV2



TH56k-BV3

BV3 preferable for samples with larger diameter

Insert jaws for TH56k: Scope of supply 1 set = 4 jaws

Quick change system, insert jaws require carriers (TH56k-GT30)

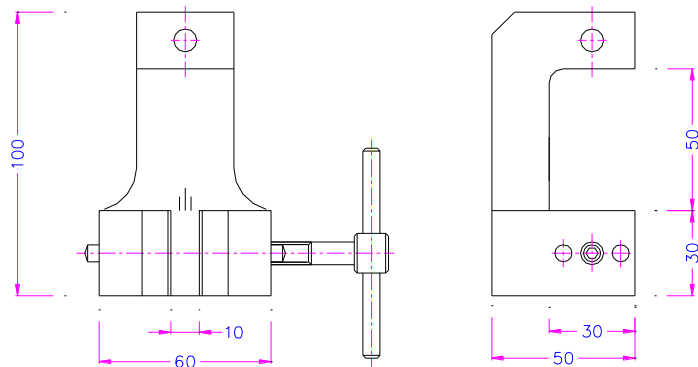
Item no.	Surface	Clamping surface H x W	Opening	Weight 1 pair
TH56k-GT30	Carrier	-	-	0.09 kg
TH56k-EB	Blank insert jaws	30 x 30 mm	0-8 mm	0.05 kg
TH56k-EBG	Rubber insert jaws	30 x 30 mm	0-6 mm	0.06 kg
TH56k-EBP	Pyramid insert jaws	30 x 30 mm	0-8 mm	0.05 kg
TH56k-EBD	Diamond insert jaws	30 x 30 mm	0-6 mm	0.06 kg

Jaws with other dimensions and surface coatings on request

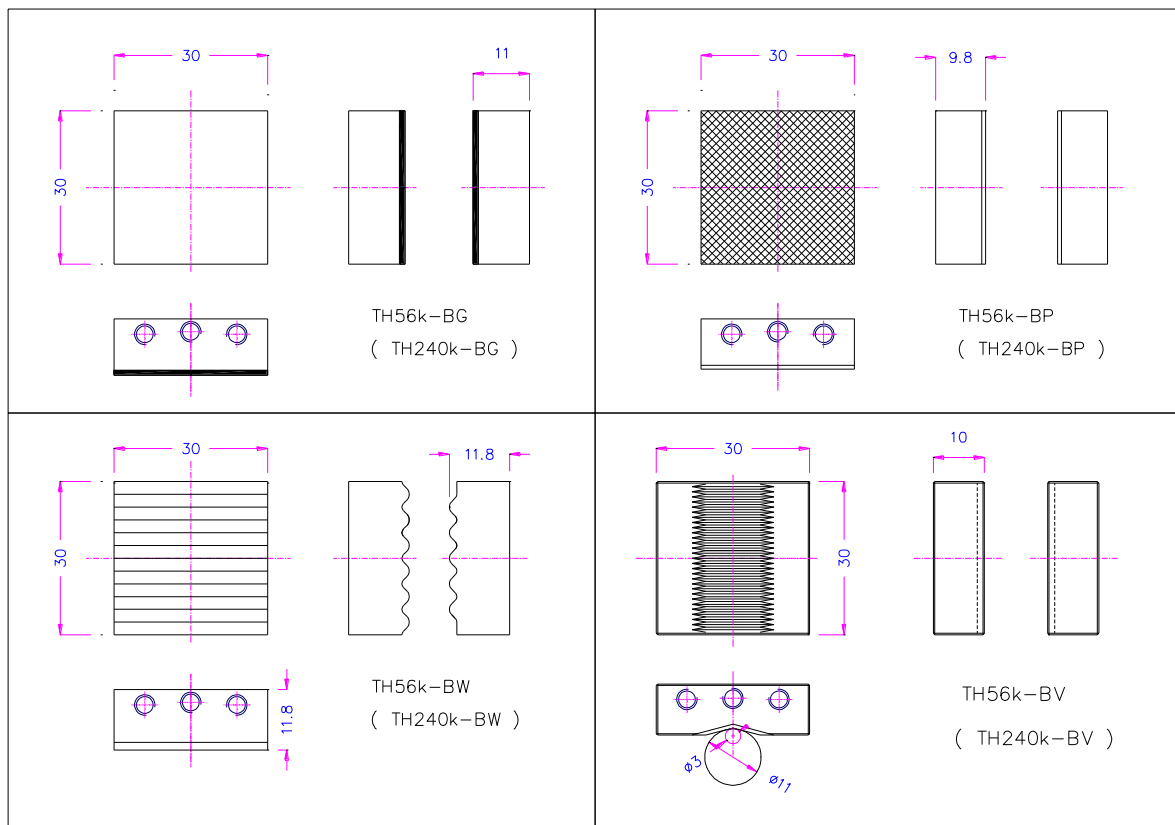
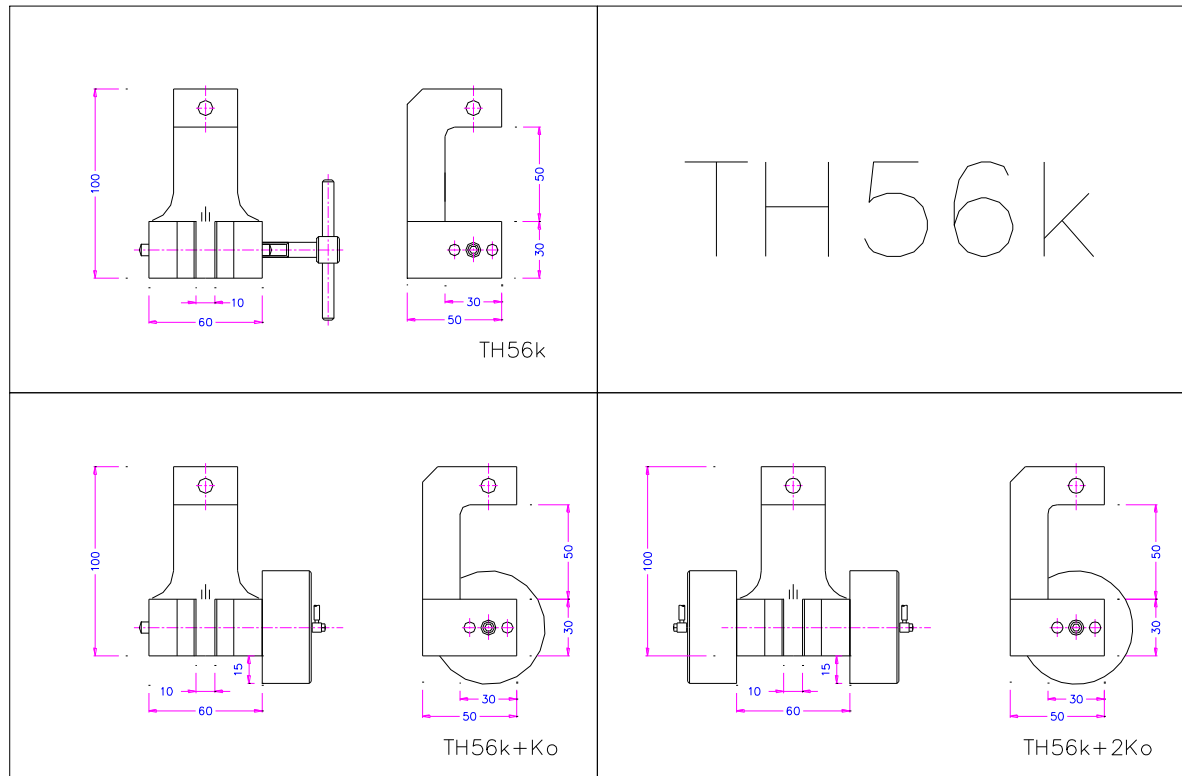
BP and BW jaws are hardened (58 HRC) and nickel-plated (5ym chemical)



TH56k-GT30+TH56k-EBP



TH56k



See also www.grip.de/G06