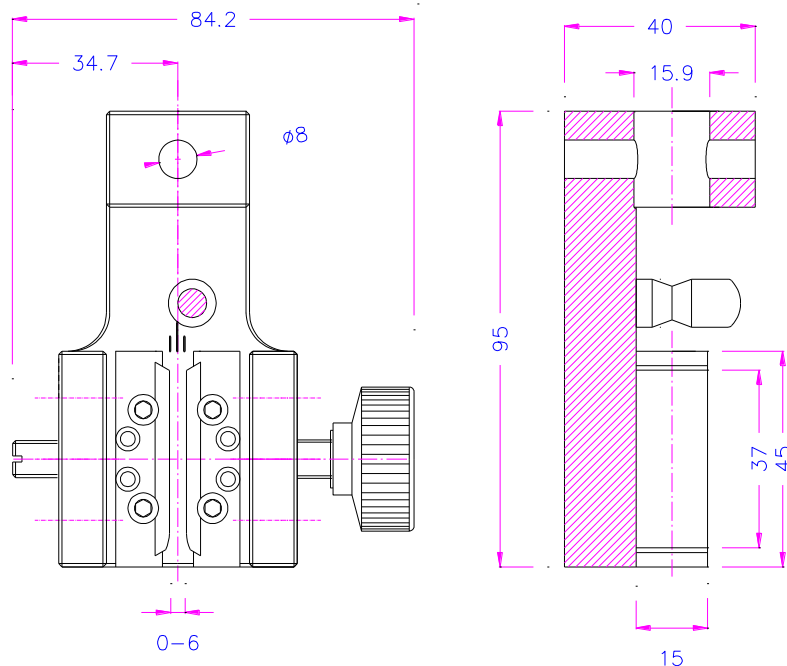


GRIP FOR WIRES

This grip is used for fine wires, thin ropes and narrow bands

info@si-instruments.com.au
www.si-instruments.com.au

Item no.:	TH9
Max. load:	2.5 kN
Connection:	Af159 mm or Af20 mm Further connections on request
Body:	Aluminum, anodized
Weight per grip with jaws:	380 gram
Temperature range*:	0°C ... +70° Further temperature ranges on request
Scope of delivery:	1 pair incl. carriers for insert jaws. Insert jaws must be ordered separately



Insert jaws for TH9:

For a quick change of insert jaws, a carrier is needed (TH9-GT). Scope of delivery: 1 set= 4 jaws

Item No.	Surface	Clamping surface (H x W)	Opening	Weight per pair
TH9-GT	Carrier for insert jaws	-	-	84 g
TH9-EB	Blank insert jaws	37x15 mm	0 – 5 mm	26 g
TH9-EBD	Diamond-coated insert jaws	37x15 mm	0 – 5 mm	26 g

Jaws faces with other dimensions and surface coatings are available on request



TH9-EBD

TH9-EB

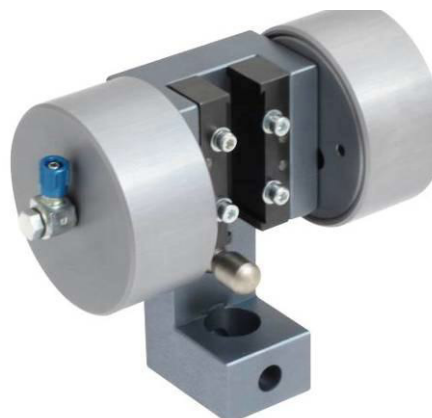
TH9-GT

Pneumatic versions

Item no.:	TH9+Ko and TH9+2Ko
Max. load:	2.5 kN
Clamping force:	1.3 kN
Connection:	Af159 mm or Af20 mm Further connections on request
Pneumatic connection:	M5
Body:	Aluminum, anodized
Weight per grip with jaws:	550 gram (TH9+Ko) 710 gram (TH9+2Ko)
Temperature range*:	0°C ... +70° Further temperature ranges on request
Scope of delivery:	1 pair incl. carriers for insert jaws. Insert jaws must be ordered separately



TH9+Ko



TH9+2Ko

Pneumatic accessories:



TH205-1 Foot pedals

None locking: The jaws of the grip open by pressing the foot pedal and close after removing the foot from the pedal.
Scope of delivery: 1 pair of foot switches including tubes and fittings



TH205-2 Foot pedals

With locking function: The jaws of the grip open by pressing the foot pedal and remain opened after removing the foot from the pedal. The jaws close by pressing the pedal one more time.
Scope of delivery: 1 pair of foot switches including tubes and fittings



TH205-1+PR Pressure regulator

Optional for TH205-1 or TH205-2
To adjust air pressure: 1-10 bar



TH205-3 Hand switches

With locking function: The jaws of the grip close by pulling the handle and remain closed. The jaws open by pushing the handle back.
Scope of delivery: 1 unit of hand switches including tubes and fittings



TH205-4-M5 Pneumatic micro-hand switches

Pneumatic micro – hand switches with M5 connection, tubes and fittings
With locking function (see TH205-3)
The hand switches are directly mounted at the grips. 3/2 directional valve
Scope of supply: 2 hand switches including tubes and fittings



TH216 Compressor for laboratories, oil-lubricated

Max pressure 16 bar, 230V, noise level: 38dB(A)/1m
Displacement 5 l/min, tank size 3.1 litre (0.82 gallon)
Dimensions: 340x290x340 mm (L x W x H); weight 16 kg
Different voltages available on request

See also:

www.grip.de/G06/TH9
www.grip.de/G12/TH9+Ko